

Welcome to Dr. P.D.B.H. Government Post Graduate College Facilities & Infrastructure

Dr. P.D.B.H. Government Post Graduate College, Kotdwar, Garhwal (Uttarakhand) is committed to providing quality education supported by modern infrastructure, advanced academic resources, and student-friendly facilities. The college campus is designed to promote excellence in teaching, learning, research, sports, cultural activities, and holistic student development.

Campus Resources & Facilities

List of Available resources

| Sr.No. | Name of Resources | Sr.No. | Name of Resources |
|--------|------------------------------------|--------|-------------------------------------------------------------|
| 1. | Library (Central and Departmental) | 11. | NSS, Scout & Guide and Rover Rangers |
| 2. | E-Granthalay (E-Library) | 12. | Entrepreneurship cell |
| 3. | Laboratory | 13. | SCSP Cell |
| | i. Physics Lab | 14. | Wi-Fi Department |
| | ii. Botany Lab | 15. | RO Water |
| | iii. Chemistry Lab | 16. | Red Cross |
| | iv. Zoology Lab | 17. | Parking –Common for students |
| | v. Home Science Lab | 18. | Open study centre - IGNOU and UOU |
| | vi. Geography Lab | 19. | Gymnasium and Badminton court, basketball court |
| | vii. Music | 20. | College canteen |
| | viii. Drawing and Painting | 21. | Lift (For Differentially abled person) |
| | ix. Biotech lab | 22. | Multipurpose Hall (Gaura devi) |
| | x. Psychology lab | 23. | Water pump for Water supply |
| | xi. Language lab | 24. | Amenities at Walking Distance- Bank, ATM and Post office |
| | xii. Art & Craft Lab | | |
| 4. | Hostel (Girls) | 25. | Career counselling and placement cell |
| 5. | Parking –Staff (Tin shade) | | |
| 6. | National Cadet Corps-NCC | | |
| 7. | Botanical Garden | 26. | IT Lab |
| 8. | Auditorium (APJ HALL) | 27. | Video conferencing room |
| 9. | Playground | 28. | Girls Common room |
| 10. | Smart class room | 29. | |

Science Labrotary















**NOVEL CORONAVIRUS
(COVID-19)**



HOW CORONAVIRUS REPLICATES
1. Infects host cell 2. Enters cell 3. Replicates 4. New spikes are attached to cell (PE)
& M Protein & Spike (S) protein is



DEVELOPMENT OF DICOT EMBRYO



ZYGOTE

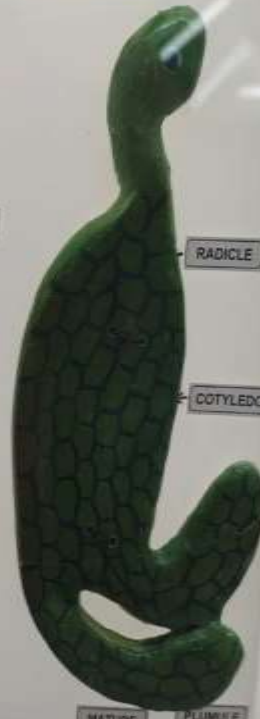


GLOBULAR EMBRYO



HEART SHAPED EMBRYO

SUSPENSOR



RADICLE

COTYLEDON

MATURE

PLUMULE

















B.Ed. Departmental Library



b





SMART CLASSROOM



Music Lab



Drawing Lab



Badminton court



VC Room



Bio-tech smart class



Home Science Lab



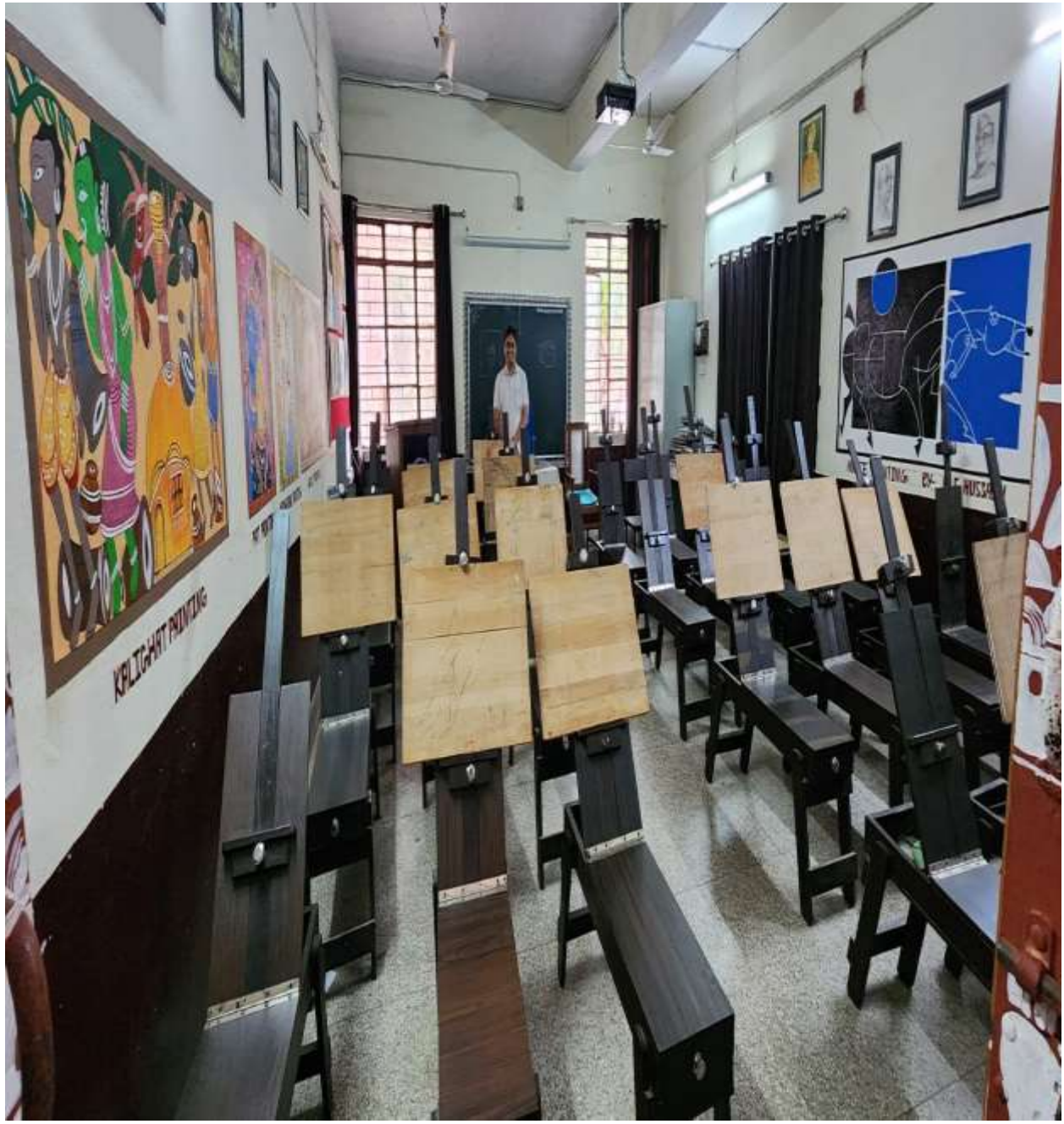
Geography Lab



Physics Lab



Drawing Resource Room



Botanical Garden



RO water (Drinking Water facilities)





Auditorium



Seminar Hall

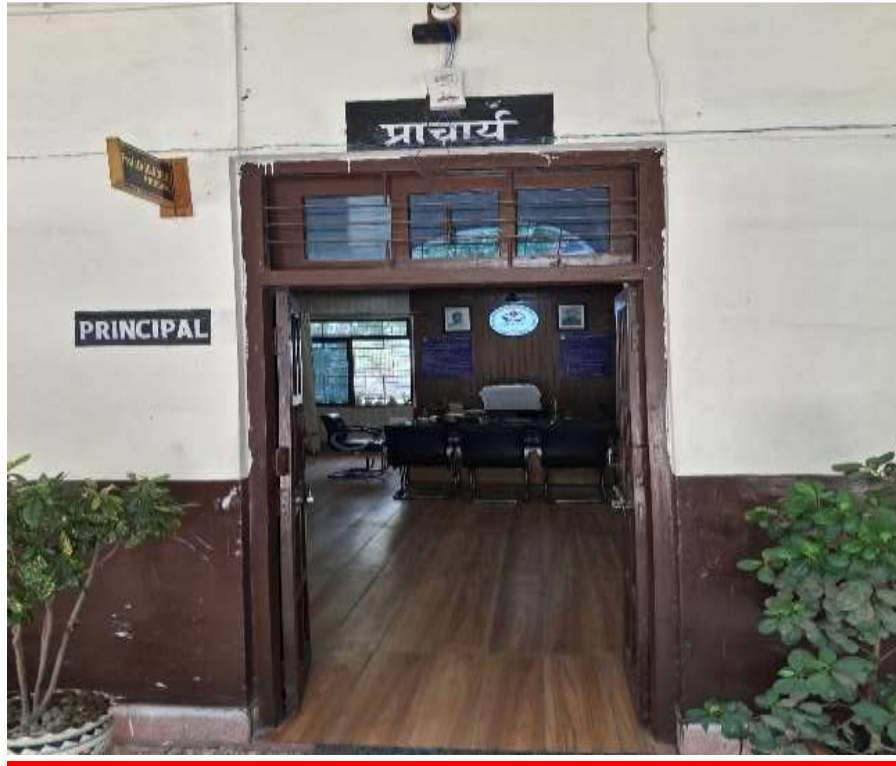




Lift Facilities



Principal Room



Playground



Basketball court



College Canteen



Girls Hostel

(Newly Constructed and ready to handover)



N.C.C.





N.S.S.



Rover Rengers



I.T.Lab



Girls Common Room



Toilet/Washroom





Parking Facilities



Wi-Fi department

